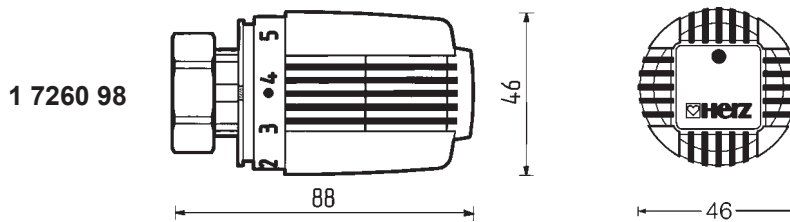


HERZ-
Thermostatic Head "D"



HERZ-
Thermostatic Head "H"

- 1 7260 98 Radiator Thermostat "H" with Liquid Sensor (Hydrosensor)**
for direct mounting onto radiators with integrated valves with connection thread M 30 x 1.5; adjustable frost release, limitation and locking of selected temperature range.
- 1 7260 83 Radiator thermostat "H" for the visually handicapped**
same as 1 7260 98, with setting marks on handwheel and operating instructions in braille.
- 1 7260 99 Radiator Thermostat "D" with Liquid Sensor (Hydrosensor)**
for direct mounting onto radiators with integrated valves by means of clips or snap-on connections, adjustable frost release, limitation and locking of selected temperature range.
- 1 7260 84 Radiator thermostat "D" for the visually handicapped**
same as 1 7260 99, with setting marks on handwheel and operating instructions in braille.

Models



011
EN 215
tested and registered
certificated products
1 7260 98
1 7260 99

Set temperaturerange 6–28 °C
Frost release at 6 °C, adjustable, handwheel mark " *".

Operating Data

By setting the scale marks opposite the display pointer it is possible to achieve the following approximate temperatures in the room. Deviations of a few degrees (K) are possible according to the mode of installation and design of the heating system.

Mark	*	1	2	3	●	4	5	max.
approx. °C	6	10	13	17,5	20	22	25	28

The comfort point " ● " is located between the marks "3" and "4" on the hand wheel scale. This position corresponds to a room temperature of approximately 20 °C, which means optimum heating comfort and energy saving.



Adjustment Options

Hand Wheel Scale

Comfort Point

After the end of the heating period, open thermostat completely by turning anti-clockwise to prevent the formation of dirt deposits at the valve seat.

Summer Position "Max."

The HERZ thermostat serves as a room temperature sensing and control unit. The change in volume of the liquid contained in the hydrosensor actuates a piston which on its part moves the valve spindle.

Mode of Operation

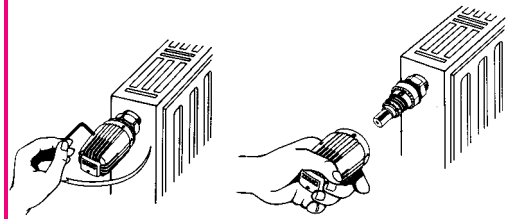
We reserve the right to make modifications necessitated by technological progress.

Adjustments for Limiting or Locking the Set Temperature Range

Removal of Handwheel from the Thermostatic Head

In the course of any adjustment to limit or lock the set temperature range, the handwheel must be removed.

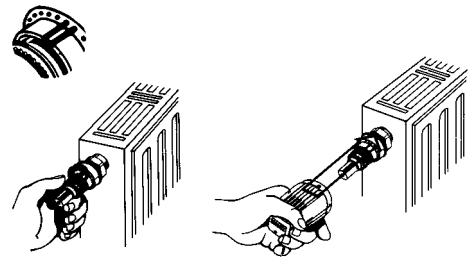
1. Unscrew the locking screw by approximately 3 turns of a 2-mm-Allen key.
2. Set the handwheel to the mark at which the temperature range is to be limited or locked. Before removing the handwheel mark the pre-set position because after the adjustment process described below the handwheel must be returned to exactly the same position.
3. Remove handwheel.



Attention: The position of the handwheel must not be changed (twisted), once the thermostat element becomes visible, since this would result in a change of the factory-set temperature range thus requiring new pre-setting.

Resetting the Thermostat Element

The thermostat element and the thread feature colour marks corresponding to the adjustment in "*" made by the manufacturer. Where a new setting is required screw the thermostat element into the threaded part until the two colour dots coincide. Then position the handwheel again in such a way that the mark "*" is above the pointer.

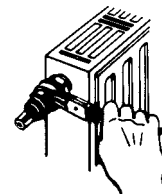


Limiting or locking of Temperature Range

This is performed by changing the position of the limiting pins located in the threaded part of the thermostat. Flat pliers are the most suitable tool for this task.

The two limiting pins are positioned by the manufacturer in such a way that the entire temperature range is available.

After adjustment, snap on the handwheel and slightly tighten the locking screw.



HERZ-3000-Connection Systems for Radiators with Integrated Valves

For connecting the radiators with integrated valves to the piping (one and two pipe systems) use HERZ-3000-bypass bodies with shutoff and draining function or straight and angle model single shutoff valves with presetting and draining function. These components permit any mode of installation.

For more information consult the HERZ-3000 standard sheet.

HERZ-Thermostat "H" – 1 7260 98, 1 7260 83

The HERZ-thermostat "H" is screwed directly onto the M 30 x 1.5 connection thread of radiators with integrated valves without using an adapter.

Field of Application

1. Remove cap or cover from the lower part of the thermostat.
2. Open thermostat completely, which corresponds to the "max" presetting position as delivered. Turn the thermostat in such a way that the pointer is perfectly visible and points upwards.
3. Place union nut on the lower part of the thermostat and tighten with 32-mm-open end wrench.
4. Test for proper functioning by turning the handwheel and set to the desired temperature.

Installation

Under no circumstances should the thermostat be exposed to direct sunlight or to the effects of equipment emitting relevant quantities of heat (e.g. TV-sets). If the radiator is covered (e.g. by curtains) this will cause heat accumulation zones in which the thermostat cannot sense the room temperature properly and consequently cannot control it.

Important for Installation

In these cases, use HERZ-thermostats with remote sensor (7430) or remote control (7330) which are mounted onto the thermostatic lower part integrated into the radiator by means of the HERZ-adapter ring (1 6357 11).

To prevent theft retaining clips are available that are installed over the fastening nut and which can only be opened with a special key.

Theft Protection

- | | |
|-----------|--|
| 1 6616 00 | 2 mm Allen key, for HERZ thermostatic valve heads |
| 1 6640 00 | HERZ Universal key, to open theft protection device 1 9552 98 |
| 1 9552 98 | Theft protection "H" (snap clips), opening by means of universal key 1 6640 00 |

Accessories

HERZ-Thermostat "D" – 1 7260 99, 1 7260 84

The HERZ-thermostat "D" is mounted directly onto the radiator with integrated valves suitable for clip or snap-on connection without using an adapter.

Field of Application

1. Remove cap from the radiator.
2. Place thermostatic head in "completely open" position – as delivered – and with the base marking (display groove) pointing upwards onto the upper part of the valve in such a way that the ribs of the anti-twist lock engage in the notches of the upper part. For this purpose, it is necessary to slide the fastening nut back towards the hand wheel. Slide the thermostatic head into position up to the stop. A slight resistance is to be overcome until it snaps in.
3. Slide the fastening nut towards the radiator and gently turn clockwise up to the stop.
4. Test for proper functioning by turning the hand wheel and set to the desired temperature.

Installation

Under no circumstances should the thermostat be exposed to direct sunlight or to the effects of equipment emitting relevant quantities of heat (e.g. TV-sets). If the radiator is covered (e.g. by curtains) this will cause heat accumulation zones in which the thermostat cannot sense the room temperature properly and consequently cannot control it.

Important for Installation

In these cases, use HERZ-thermostats with remote sensor (7430) or remote control (7330) which are mounted onto the valve upper part integrated into the radiator by means of the HERZ-adapter ring (1 6362 01).



To prevent theft retaining clips are available that are installed over the fastening nut and which can only be opened with a special key.

Theft Protection

- | | |
|-----------|--|
| 1 6616 00 | 2 mm Allen key, for HERZ thermostatic valve heads |
| 1 6640 00 | HERZ Universal key, to open theft protection device 1 9552 03 |
| 1 6807 90 | HERZ-TS-90 Assembly key |
| 1 9552 03 | Theft protection (snap clips), opening by means of universal key 1 6640 00 |

Accessories